

INODA

and

PAHT

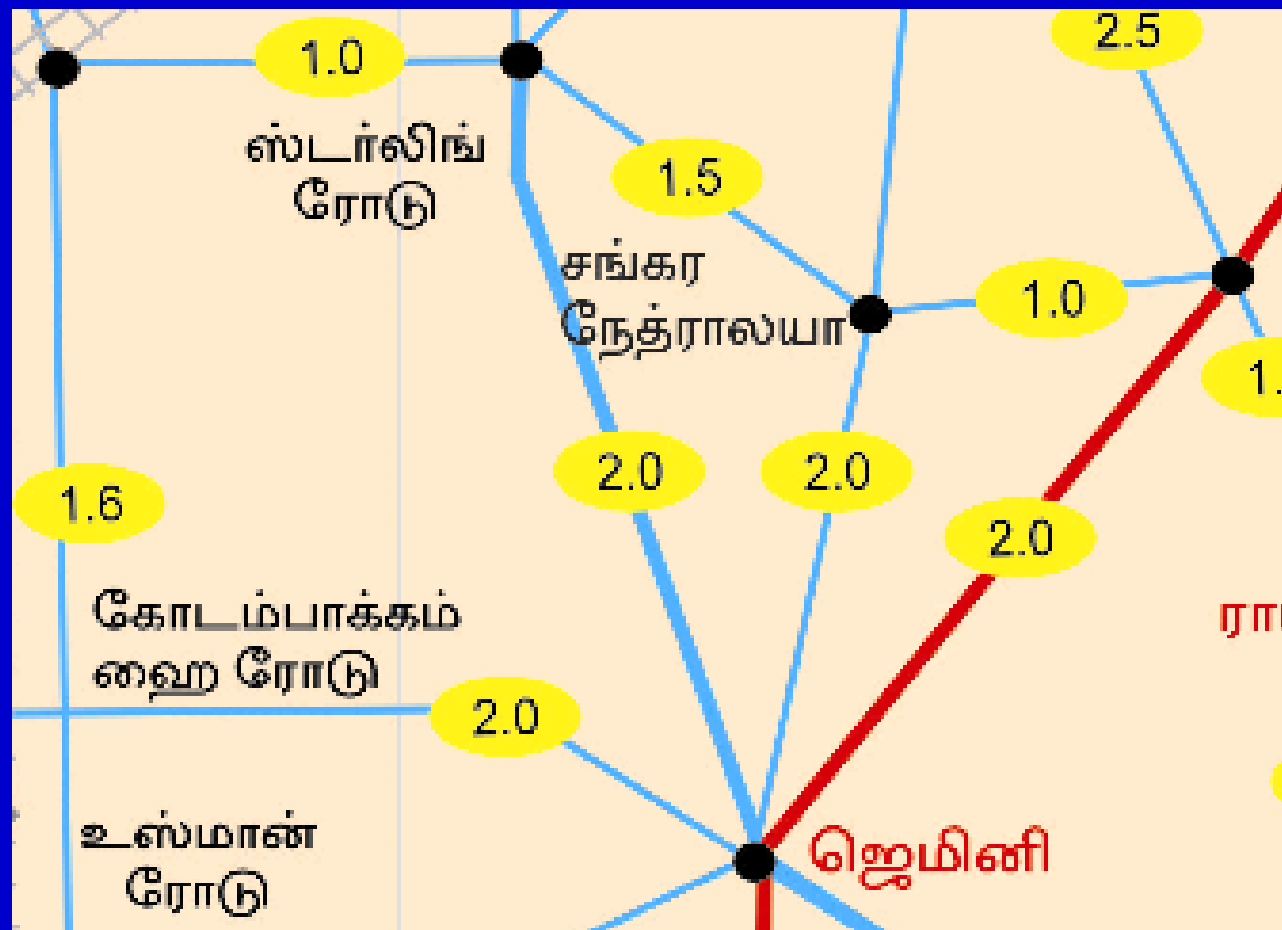
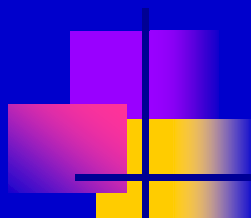


The Distance Map of Chennai



The Perspective

- Not about “auto drivers”
- It is the micro transit of the city





AutoFact: Second largest

- Second largest people mover in city
 - Autos move 15 lakhs, Buses 30 lakhs
- Only door-to-door service
 - Ambulance of the poor
- Autos reduce traffic congestion
 - Turns in 5 m, taxis require 12 m



AutoFact:

Contribution to City Life

- Good transit improves city life
- Music season, tourism, night cinema can flourish with a good auto system
- Critical for better quality of living



AutoFact:

Contribution to Economy

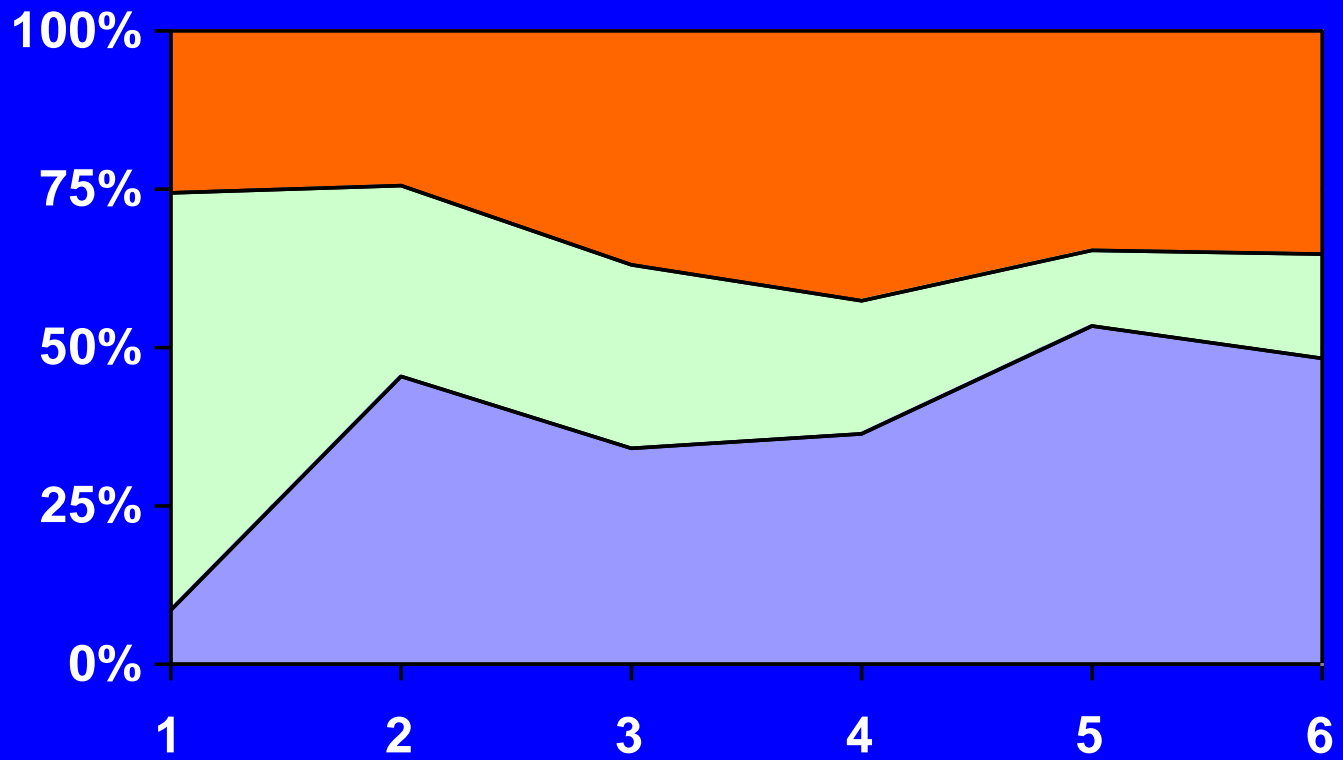
- Investment of Rs 500 Crores
- Daily revenue of Rs 2 Crores
- Livelihood of 80,000 driver families
- Ancillary tradesmen of 10,000 families



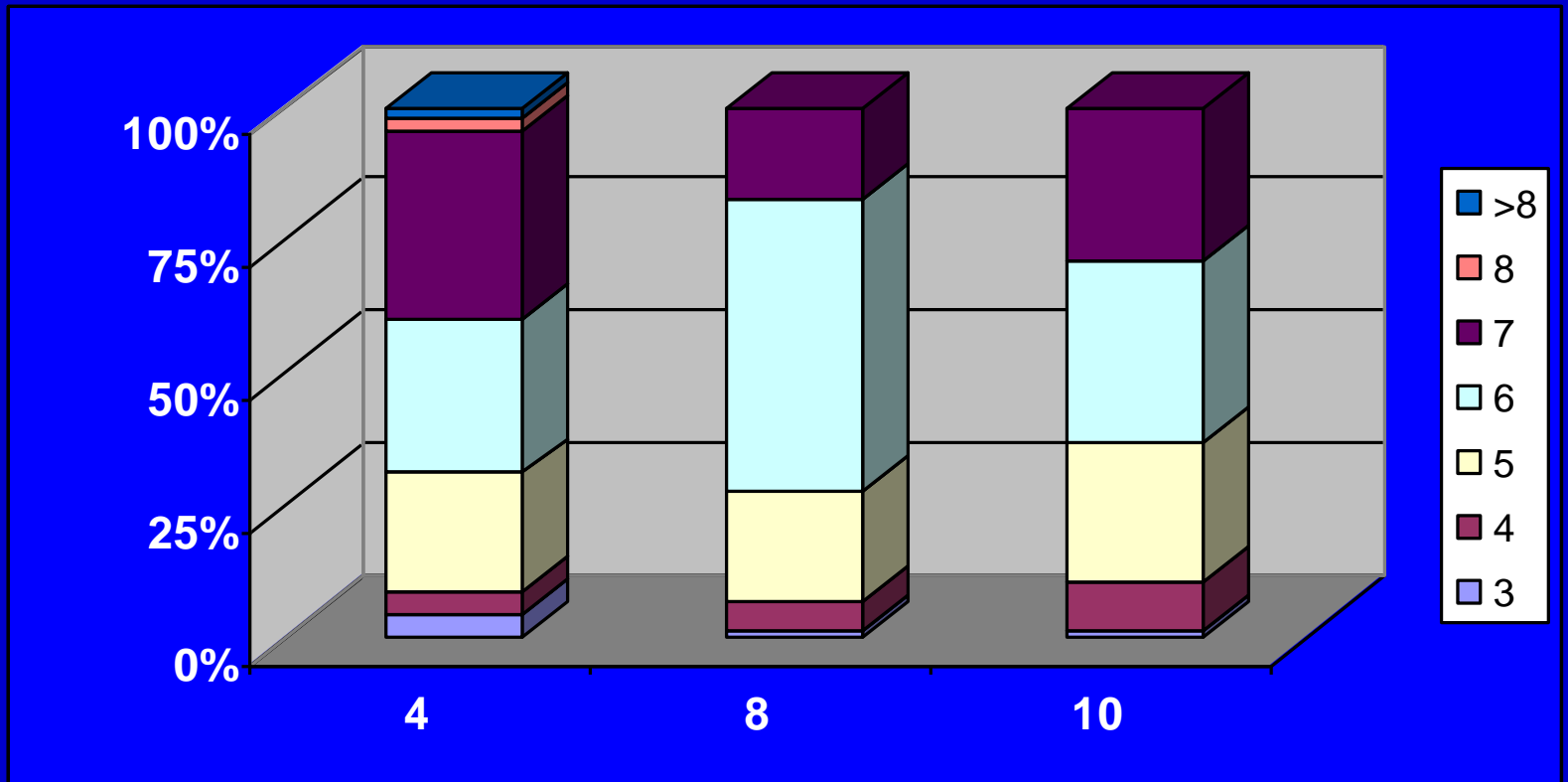
The Survey

- Comprehensive socio- economic- vocational survey
- Scientific and academically accurate
- 270 samples, 3 distances each
- 90% confidence level
- Survey of passengers
- Survey of short distance travel

How far is Central

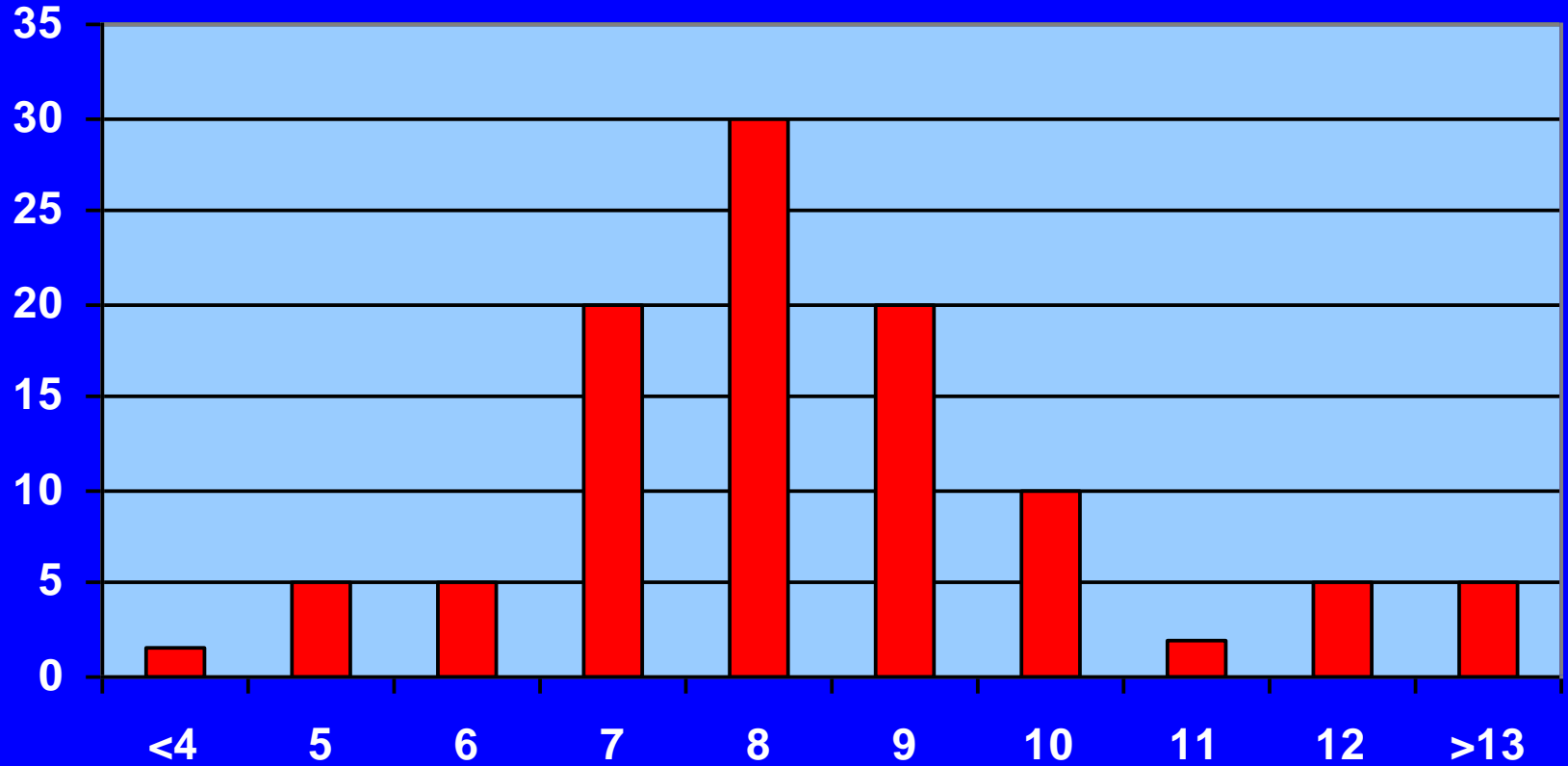


How much





What is 8 Km





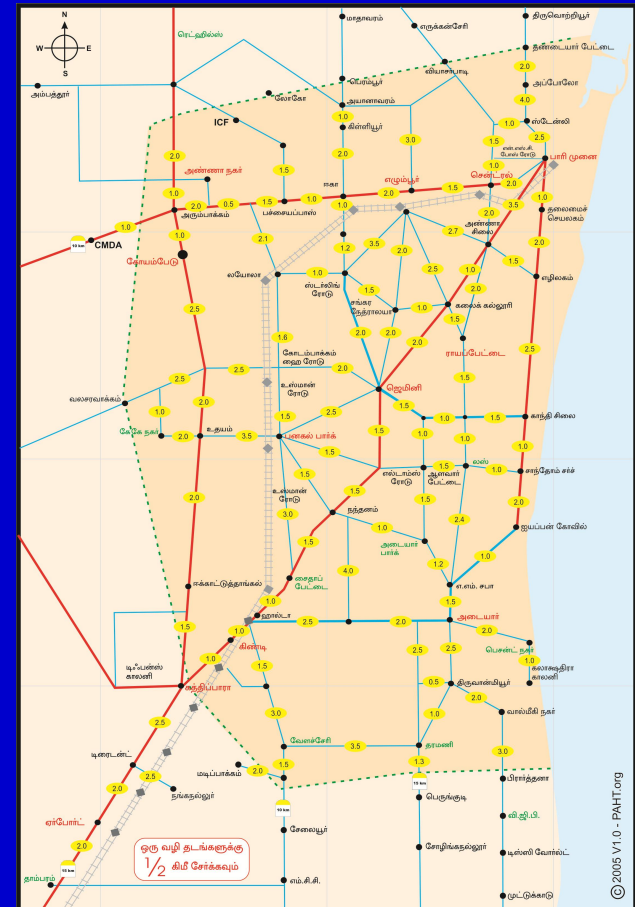
The Situation

- Many do not know actual distance
- Wide variation in fares

- Knowledge of distance, lay of the city can reduce misunderstanding

The Distance Map

- Intuitive
- Over 100 distances
- Round numbers
 $\frac{1}{2}$, 1, $1\frac{1}{2}$, 2, $2\frac{1}{2}$ Km
- Recognisable marks
- Accuracy over time





INODA *and*



The Public Administration Help Tank

Improving
Transportation, Culture, Environment
and Quality of Life

INODA *and*



The Public Administration Help Tank

Improving
Transportation, Culture, Environment
and Quality of Life



The Automens' Initiative

Improving
Transportation, Culture,
Environment and Quality of Life